

## HR Series Replaces Eaton S Series



**Standard Pricing:** **Shaft** 1" Woodruff Keyed, **Mount** SAE A 2Hole, **Ports** 7/8" UNF, **Case** 7/16" UNF

Part Number		Specifications							
Part Number		CC/Rev	Rotor Width L1 - mm	Speed Max Cont RPM	Flow Max Cont LPM	Pressure Drop Max Cont Bar	Inlet Pressure Max Cont Bar	Torque Max Cont Nm	Weight Kg
HR 50 C4UE		51.5	9	777	40	140	140	98	6.6
HR 80 C4UE		80.3	14	747	60	140	140	152	6.7
HR 100 C4UE		99.8	17.4	601	60	140	140	189	7
<b>HR 125 C4UE</b>		122.5	17.4	490	60	140	140	232	7.1
HR 160 C4UE		153.6	21.8	391	60	140	140	291	7.3
HR 200 C4UE		195.8	27.8	306	60	125	140	331	7.8
HR 250 C4UE		245	34.8	245	60	105	140	348	8.2
HR 315 C4UE		306	43.5	196	60	100	140	414	8.9
HR 400 C4UE		386	54.8	155	60	85	140	444	9.6

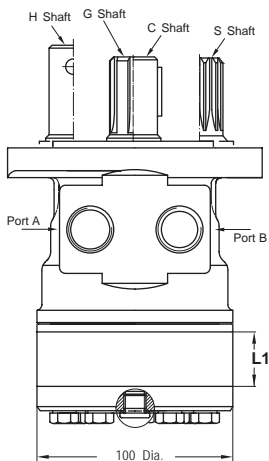
\* To assure best motor life, fill with fluid and run at moderate load for 5-10 minutes.

**Motor Seals to suit HR Series, Page 26**

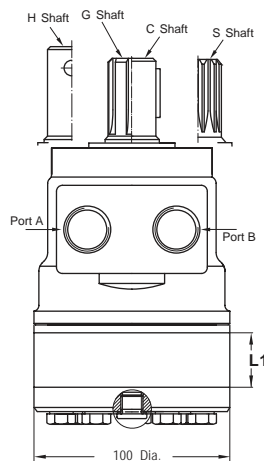
### Code Builder:

MOUNTING		OPTIONS		SHAFTS		PORTS		SHAFT SEALS	
Code	Description	Code	Description	Code	Description	Code	Description	Code	Description
-	SAE A 2Hole 82.5mm Spigot	N	Needle Bearings	C	1" Straight Woodruff Keyed	4	Side Ports 7/8" UNF	U	# 200 Bar
Q	Square 4Bolt 44.4mm Spigot			CW	25mm Staight Keyed	1	Manifold Ports	V	# 150 Bar Viton
				G	1" SAE 6B Splined				# Refer to specifications for performance data.
				S	7/8" 13T Splined				
				H	1" Cross Hole - 8mm Hole				
				TE	1" 1:8 Tapered				

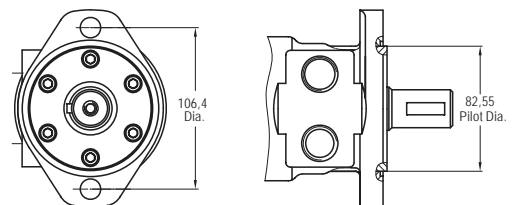
**Standard Mount - HR Series**



**Q Mount - HRQ Series**



**Standard Mount, SAE A 2Hole**



**Q - Mount, 3/8 UNC 4Bolt**

