



Angle Sensor WGC 090/1401 SA

Electronic Control Systems:Sensors:Angle sensor

Product description

Type	WGC 090/1401 SA
Description	Capacitive Angle Sensor
Product description	<p>The speed of further technological development of the systems has resulted in a situation where the sensor engineering also needs to be improved while at the same time maintaining a good price-performance ratio. HIRSCHMANN has responded to this challenge with its new angle sensor, which can be described with the words SIMPLE, COMPACT and PRECISE:</p> <p>- Absolute value sensor- new mode of action- wide temperature range- high degree of operational safety, even under extreme conditions- improved rotative effect- simple zero point calibration- excellent cost/performance ratio</p>
Construction type	Sensor with mounting plate
Order No.	606656 - 64 090 06 1401

Technical data

Standards	EN61000-6-1, EN61000-6-2, EN61000-6-3, EN61000-6-4
Operating voltage	9 ... 36 V DC
Current consumption	approx. 80 mA
Measuring range	0° ... +90°
Overrange limit	no
Signal output	4 ... 20 mA (0° = 20 mA / +90° = 4 mA)
Accuracy	< ± 0,2° typ.
Temperature comp. zero point	± 0,002° /K
Temperature comp. over range	± 0,002° /K
Linearity	< ± 0,2°
Hysteresis	< ± 0,1°
Electrical connection	Plug M12 x 1 (male)
Material	aluminium alloy, surface protected
Mounting position	vertical
Weight approx.	0,67 kg (without mounting plate)

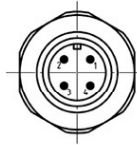
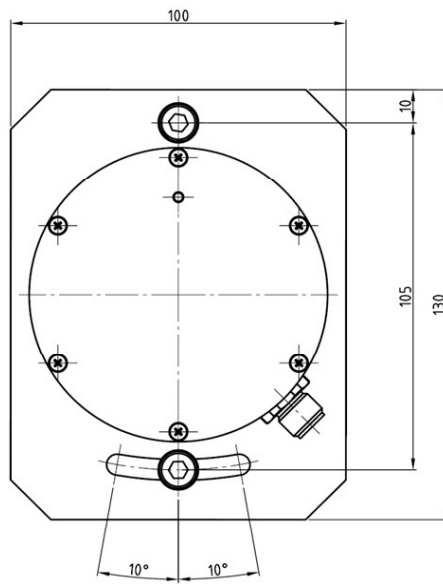
Environmental conditions

Operating temperature	-40 ... +85° C
Storage temperature	-40 ... +85° C
Degree of protection (IP)	IP 67
Saltwater-proof	no, saltwater-proof version on request

Accessories

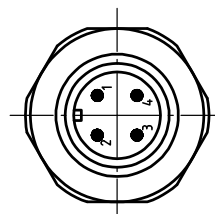
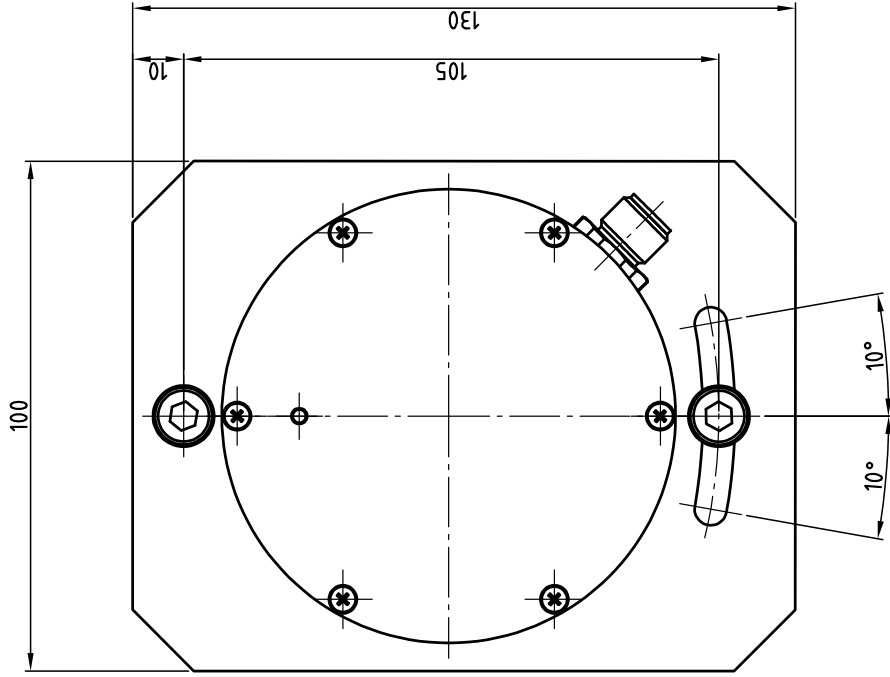
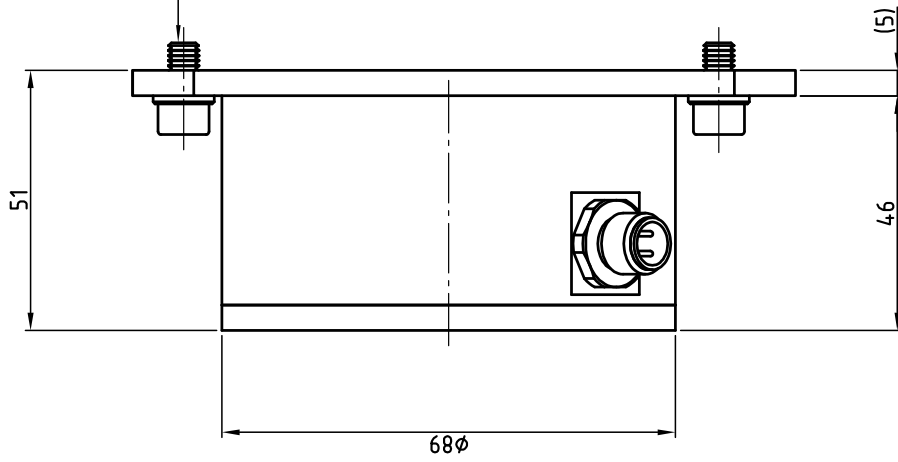
Options	Connecting cable, shielded, one-side plug female, for WGC with current interface: 324 774 (1,5 m) / 324 966 (5 m) / 324 971 (10 m) / 324 972 (15 m) / 324 973 (20 m) / 324 974 (25 m) / 324 975 (30 m)
---------	---

Drawing



1	+UB=9...36VDC
2	NC
3	GND
4	Signal 4-20mA

Zyl.-Schr. M6x12 DIN912
Scheibe 6.4 DIN125



- 1 +UB=9...36VDC
- 2 NC
- 3 GND
- 4 Signal 4-20mA

Für diese Zeichnung behalten wir uns alle Rechte vor. Ohne unsere vorherige Zustimmung darf sie weder vervielfältigt noch Dritten zugänglich gemacht werden, und sie darf durch den Empfänger oder Dritte auch nicht in anderer Weise mißbräuchlich verwendet werden. All rights reserved for this drawing. It is prohibited to duplicate or make available to third parties without PAT's consent. Any other improper use by the addressee or third parties is prohibited as well.

Schutzvermerk ISO 16016 beachten Protection notices ISO 16016		Freimaßtoleranzen DIN 7168 für mittel.		Oberfläche		Maßstab	Position	Menge
						1:1	-	-
		Bearb.	Datum	Name				
		26.10.04	26.10.04	queth				
		Geprf.						
		Norm						
		Mat.-Nr.	418028					
		HIRSCHMANN Elektronik Control Systems Heinzstraße 10 418028						
		PAT GmbH Heinzstraße 10 418028						
		Datum	Name	que				
		21.02.05						
		Zust.	Änderungen					
		1						
		Dateiname		418028.dwg				
		Blatt						
		64 090 08 1401 D						
		WG-C 090/1401						
		Einba Zeichnung						
		CAD erstellte Zeichnung. Änderungen nur mit CAD zulässig!						