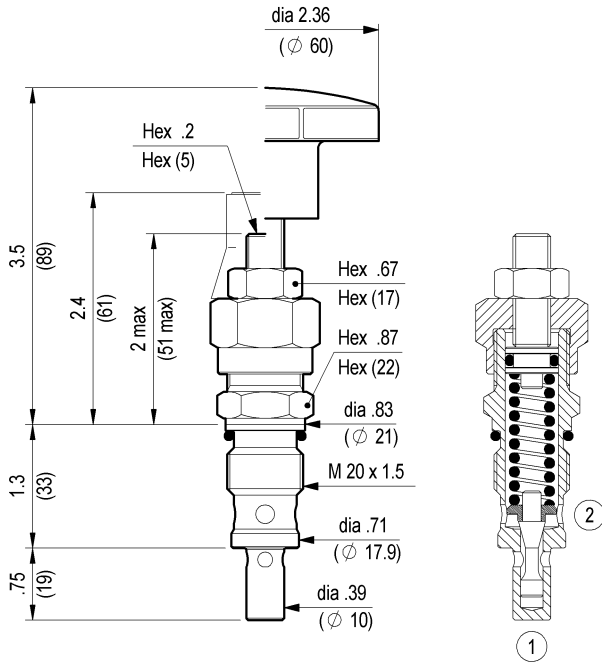


**RELIEF, DIRECT ACTING GUIDED POPPET TYPE  
SPECIAL CAVITY**



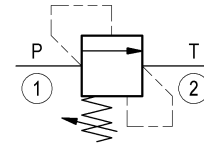
**VS-30**

**04.11.18 - X - 99 - Z**



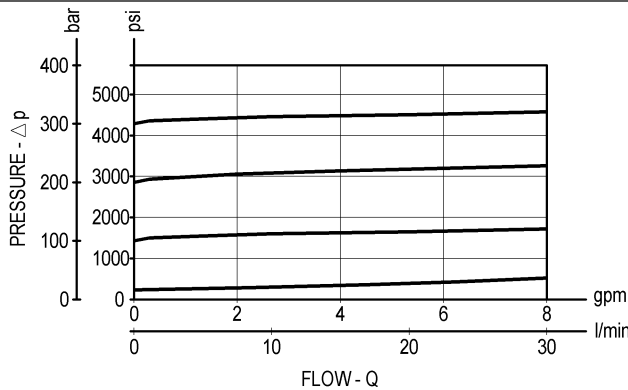
Inches  
(mm)

Flow is blocked from 1 to 2 until pressure increases to meet the selected valve setting, lifting the poppet from its seat and allowing relief flow through 2 to tank. Pressure at 2 is additive to the relief setting of the valve. The unique Oil Control poppet design provides enhanced stability at all flows and pressures.



**TECHNICAL DATA**

|                       |                           |            |
|-----------------------|---------------------------|------------|
| Max. pressure:        | 5000 psi                  | (350 bar)  |
| Max. flow:            | 8 gpm                     | (30 l/min) |
| Special cavity :      | 008 (see page CT.S.001.U) |            |
| Installation torque : | 33-37 ft-lb               | (45-50 Nm) |
| Weight:               | 0.375 lbs                 | (0.170 Kg) |



**X ADJUSTMENTS**

|           |                             |  |
|-----------|-----------------------------|--|
| <b>03</b> | Leakproof hex. socket screw |  |
| <b>04</b> | Handknob and locknut        |  |

**SPRINGS**

| <b>Z</b>  | Adj. press. range psi (bar) | Press. increase psi / turn (bar/turn) | Standard setting psi (bar) (Q=5 l/min) | Ordering code | Color  |
|-----------|-----------------------------|---------------------------------------|--|---------------|--------|
| <b>05</b> | 75-725 (5-50)               | 174 (12)                              | 725 (50)                               | 03.51.01.077  | black  |
| <b>10</b> | 435-1450 (30-100)           | 348 (24)                              | 1450 (100)                             | 03.51.01.076  | blue   |
| <b>20</b> | 725-3000 (50-210)           | 682 (47)                              | 2900 (200)                             | 03.51.01.075  | green  |
| <b>35</b> | 1450-5000 (100-350)         | 1189 (82)                             | 5000 (350)                             | 03.51.01.059  | yellow |

**OPTIONS**

| Ordering code | Description          |
|---------------|----------------------|
| 03.05.01.003  | Sealing cap          |
| 11.04.23.003  | Tamper resistant cap |

Special settings available. Contact factory authorized representative for ordering code.