

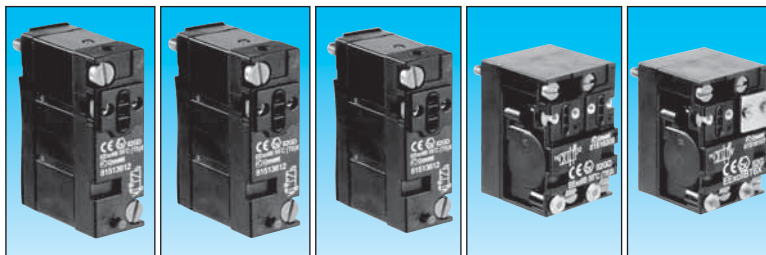


Valve modules in potentially explosive atmospheres ATEX Directive 94/9/EC

FILE No. C.PN.HOM.00004.FR
INERIS No. 17564/04
for 81 516 107 and 81 516 208

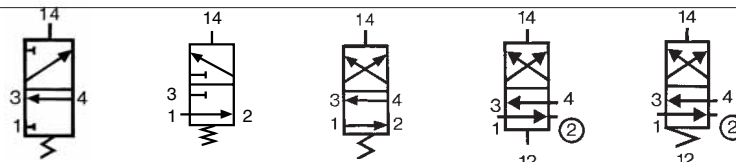
FILE No. C.PN.HOM.00005.FR
INERIS No. 17567/04
for 81 513 196, 81 513 612 and 81 513 234

Equipment intended for use in potentially explosive atmospheres conforming to Directive 94/9/EC



Type	3/2 NC monostable	3/2 NO monostable	4/2 monostable	4/2 bistable	4/2 monostable
Classification	81 513 196	81 513 612	81 513 234	81 516 208	81 516 107
Symbol	CE II 2 GD c II B 55°C T6X				CE II 2 G c II B 55°C T6X

Symbol

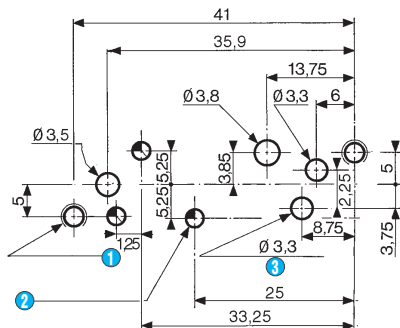


Characteristics

Width	mm	17.5	17.5	17.5	35	35
Working pressure	bars	3-8	3-8	3-8	2-8	3.5-8
Orifice diameter	mm	3	3	3	4	4
Flow at 6 bars	with Ø 4 mm sub-base (page 44)	200	200	200	300	300
	with Ø 6 mm sub-base (page 44)	Nl/min	300	300	400	400
Flow Rate	with Ø 4 mm sub-base (page 44)	kV	2.2	2.2	2.2	4
	with Ø 6 mm sub-base (page 44)		2.5	2.5	4	5
Operating temperature	°C	-10 at +50	-10 at +50	-10 at +50	-10 at +50	-10 at +50
Switching time for the valve only	ms	15	15	15	50	50
Mechanical life	operations	1.5 x 10 ⁷	1.5 x 10 ⁷	1.5 x 10 ⁷	10 ⁷	10 ⁷
Weight	g	38	38	38	106	106

Valve module footprint (pitch 17.5 mm)

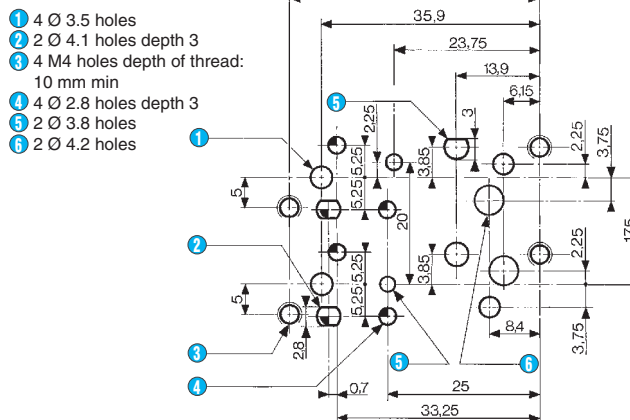
81 513 196 - 81 513 234 - 81 513 612



- ① 2 M4 holes – depth of thread: 10 mm min.
- ② 3 Ø 2.8 holes - depth: 3
- ③ 4/2 only

Valve module footprint (pitch 35 mm)

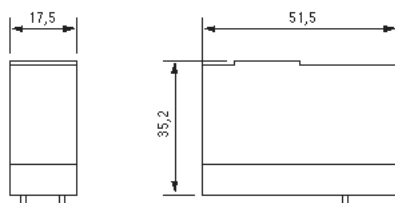
81 516 107 - 81 516 208



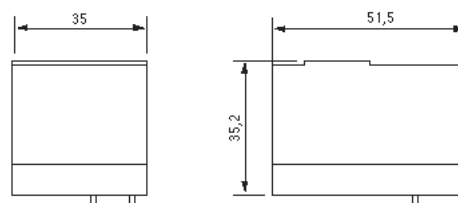
- ① 4 Ø 3.5 holes
- ② 2 Ø 4.1 holes depth 3
- ③ 4 M4 holes depth of thread: 10 mm min
- ④ 4 Ø 2.8 holes depth 3
- ⑤ 2 Ø 3.8 holes
- ⑥ 2 Ø 4.2 holes

Dimensions

81 513



81 516



Other information

If mounted in a bank, this should consist of no more than four 81 516 107/208 products or no more than eight 81 513 196/234/612 products

To order an product, you must complete the form on page 53.